

KEN HILL RETIRING AGAIN

AUCTION

SATURDAY, MAY 18, 2019 • 9:47 AM

**75 NATHAN HALE Rd. (Nickelson Little Farms)
Gillette, Wyoming 82718**

DIRECTIONS: FROM GILLETTE TAKE HWY 59 SOUTH 4 MILES AND TURN (LEFT) EAST ON UNION CHAPEL RD., GO (6 MILES) AND TURN (RIGHT) SOUTH ON FAIRVIEW RD., GO (1.5 MILES) AND TURN (RIGHT) WEST ON THOMAS PAINE RD., GO (1/2 MILE) AND TURN (LEFT) SOUTH ON NATHAN HALE RD., GO (1/3 MILE) & AUCTION SITE WILL BE LOCATED ON YOUR LEFT, WATCH FOR SIGNS!!!!!!

AUCTIONEERS NOTE: KEN HAS DECIDED TO RETIRE FROM THE HAYING BUSINESS AND SLOW DOWN, ALL THIS EQUIPMENT WAS IN USE DURING LAST YEARS HAYING SEASON AND VERY WELL MAINTAINED. COME OUT AND ENJOY A FUN DAY AT THE AUCTION, THERE WILL BE SOMETHING FOR EVERYONE.

VEHICLES & EQUIPMENT SELL @ 12:00 P.M.: 1070 CASE AGRI KING (107 HP) WITH DUAL 3100 GRAPPLE LOADER (5227 HRS) RUNS GREAT (SELLS WITH OWNERS APPROVAL) - NEW HOLLAND BR780 ROUND BALER (NEW MAIN BEARING & ROLLERS) 2 NEW BACK TIRES (ONLY 300 BALES SINCE REPAIRED) SN 52767 (SELLS WITH OWNERS APPROVAL) - 2001 BAYLINER CLASSIC CAPRI (INBOARD MOTOR) USED LAST SUMMER (SELLS WITH OWNERS APPROVAL) - JOHN DEERE (MODEL 14T) SQUARE BALER - SITREX H/90 HAY RAKE - JOHN DEERE HAY RAKE (NEW U-JOINTS) - JOHN DEERE 310 OFFSET DISC - (2) FORD 515 DBL SICKEL MOWERS 8FT & 7FT BLADES - LG. ASST. OF NEW PARTS FOR FORD MOWERS INCLUDING (30) NEW SICKELS - INTERNATIONAL 460 UTILITY TRACTOR (RUNS GOOD) - FARMALL H WITH WIDE FRONT END (LITTLE GRUMBLE BUT RUNS GOOD) - FARMALL H WITH WIDE FRONT END (RUNS GOOD) - 1991 GMC 3500 EXTENDED CAB DUALY (41,232? MILES) 2WD, RUNS GOOD - 1989 FORD SINGLE CAB (MANUAL) RUNS GOOD BUT CLUTCH IS WEAK (186,826 MILES) - 14 FT DBL AXLE TRAILER WITH SIDE RAILS, FRONT & REAR LOAD - OLDER DBL AXLE TILT TRAILER - 12 FT SINGLE AXLE TRAILER WITH SIDE RAILS - 1981 WW (20ft X 6ft) STOCK TRAILER - HD TRIPLE AXLE BUMPER PULL TRAILER WITH RAMPS & WINCH - PU BOX TRAILER WITH TOPPER (GOOD GARBAGE TRAILER) - WOOD ICE FISHING SHACK (INSULATED) WITH HEATER - STEEL WHEEL MANURE SPREADER (NEEDS SOME WORK) - 6ft BACK BLADE - SM 2 YD HYDRAULIC SCRAPER BUCKET (NEW HOSES) - (3) SECTION DRAG HARROW - OLDER SNOWMOBILE TRAILER FRAME WITH AXLE (NO DECK) - 1999 CHEVY BLAZER (PARTS ONLY) RAN WHEN PARKED - 1950 PLYMOUTH 4DR (OWNER HAS HAD RUNNING) ALOT OF PARTS, ALL THE CHROME, MOST OF THE GLASS IS GOOD - 2004 BOMBARDIER 4 WHEELER (3542 MILES) JUST TUNED UP - (4) TRAILER HOUSE AXLES - OLDER JOHN DEERE STX 38 RIDING MOWER (NEEDS WORK) - CUB CADET FT 24 FRONT TINE TILLER WITH POWER REVERSE - 1986 MIRROR CRAFT BOAT WITH 1969 HIGHLANDER TRAILER

GUNS SELL @ 11:45 A.M.: WESTERN FIELD MODEL M72 (30-30) - 98 MAUSER (8 X 57) - WINCHES-TER MODEL 74 (22 LR) - WESTERN FIELD 12 GA SINGLE SHOT - (4) NEW GAME CAMS -

OUTDOORS, SHOP & MISC.: (8) LIGHT DUTY (10ft) HORSE PANELS - HD LARGE HAY BALE FEEDER - LG. ASST. OF WOOD POSTS & STEEL FENCE POSTS (5ft TO 11ft) - (80) RR TIES - (7) 6" X 6" TIMBERS - HOG PANELS - BOB WIRE - SHEEP FENCE - (2) BOXES OF NEW SICKEL MOWER TEETH - ELECTRIC FENCE PARTS - PARMAK FENCE CHARGER - (NEW) 6 MAN POP UP ICE SHANTY - (3) POP UP ICE SHANTY'S - GRACO MAGNUM X7 PAINT SPRAYER - WEIGHTED BBALL HOOP - CEDAR STUMP - STEEL DRAWER BOLT BINS - 10ft X 10ft POP UP TENT - 8ft X 8ft GARAGE DOORS - MISC. HD CORRUGATED WIND BRAKE TIN - MISC. LUMBER - OLD PORTA-JOHN - 250 GAL FUEL TANK - FIBERGLASS TRUCK TOPPER? - (20+/-) 12ft TIN - 5 STEEL WHEELS - HORSE SLIP - 300 GAL PROPANE TANK - HORSE DRAWN DISC - OLDER DISC - 36" BUZZ SAW (PTO DRIVEN) - LEG PULLER (WILL BE WORKING THE DAY OF THE SALE) MID 40s, RUGGEDLY HANDSOME, QUITE THE CATCH - CORN SHUCKER (PTO DRIVEN) - CEMENT MIXER (NEWER MOTOR) - 500 GAL FUEL TANK ON STAND - MISC. TRUCK TOOL BOXES - ANCHORS - (40+/-) LG. LANDSCAPING BRICKS - PALLET OF CONCRETE BLOCKS - (2) SETS OF STEEL SHELVING - TRAILER NECK - PALLET OF USED CAR BATTERIES - SET OF 215/60R15 STUDDED SNOW TIRES ON RIMS - MISC. 4 FT CHAIN LINK FENCE (APPROX. 100 FT) - 4 FT CHAINLINK GATE - (25) PLASTIC 50 GAL BARRELS - WATER LINE - TORO LAWN MOWER - LG. ASST. OF SHOVELS, RAKES, SCOOPS, ETC..... - OLD DOORS - (NEW) VECTOR WINDOWS - LG. ASST. OF BALING TWINE - (NEW) MR. HEATER HUNTING BUDDY - (NEW) WEEDEATER - (NEW) RYOBI 6" GRINDER - (NEW) 87" SS PATIO HEATER - REMINGTON 30,000 BTU GARAGE HEATER - WORK BENCH - RAKE TINES - TACKLE BOXES - (3) HD POWER CORDS - LG. ASST. OF FILTERS - RATCHET STRAPS - TRAILER HITCHES & JACKS - TILE CUTTER - 3/4" RATCHET SET - ICE AUGER - LG. ASST. OF NAILS, JOIST HANGERS, SCREWS ETC... - CARPET KICKER - 20 FT ALUMINUM EXT LADDER - LINCOLN AC-225 WELDER - OXY/ACETYLENE BOT-TLES WITH TORCH & CART - PEDAL GRINDING WHEEL -

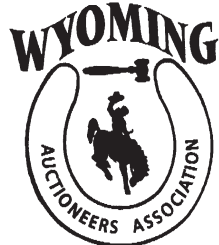
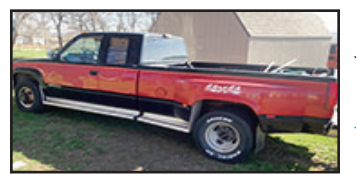
HOUSEHOLD: (NEWER) SET OF KIDS BUNK BEDS - FOOSBALL TABLE - KIDS TOYS - OLDER TONKA TOYS - FLOOR LAMPS - PLASTIC SHELVING - WIRE DOG KENNEL - GAME TABLE - KIDS WAGON WITH WOOD SIDES - OAK CHAIR - FILE CABINET - OIL LAMPS - CANNING JARS

**FOR MORE INFORMATION PLEASE CONTACT
JUSTIN 307.660.2292**

TERMS: Cash or Check with picture ID. We also take Credit Card Payments with a 3% Transaction Fee.
All items sold as is - where is - not responsible for accidents or theft.

Announcements made the day of the auction, take precedence over all printed materials. Sales Tax collected. Lunch Available.

FOR FULL LISTING GO TO AUCTIONZIP.COM ID #27765



BIESHEUVEL AUCTION & APPRAISAL

Auctioneer: Justin Biesheuvel • 307.660.2292

Sale Conducted By: