

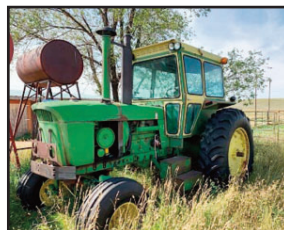
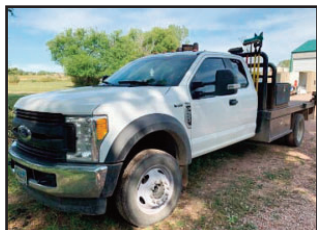
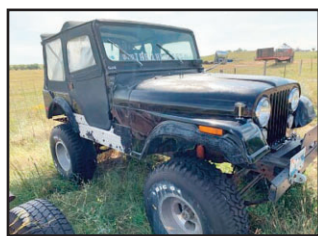
# SHEPERD RANCH, OILFIELD, FABRICATION & CLEAN-UP

# AUCTION

**SATURDAY, SEPTEMBER 21, 2019**

**10:00 AM**

**618 Grey Road • Rozet, WY 82727**



**DIRECTIONS & AUCTIONEERS NOTE:** FROM GILLETTE TAKE (OLD HWY 51) 17 MILES EAST TOWARDS MOORCROFT AND TURN NORTH ON THE GREY RD AND GO 6 MILES TO AUCTION SITE, FROM MOORCROFT TAKE HWY 51 WEST 6.5 MILES TO THE GREY RD. AND GO NORTH 6 MILES TO AUCTION SITE, WATCH FOR SIGNS!!!! BOBBY AND KELSEY ARE JUST CLEANING UP THE PLACE AND GETTING RID OF UNWANTED PROJECTS, RANCH ITEMS & EXTRA MATERIALS THAT ARE NO LONGER NEEDED, THERE ISN'T MANY SMALL ITEMS SO MAKE SURE YOU'RE HERE ON TIME BECAUSE WE WILL BE SELLING LARGER ITEMS IN THE MORNING. COME ON OUT FRIDAY FOR AN EARLY PREVIEW OR TO CHECK OUT SOME OF THE EQUIPMENT AND FABRICATION EQUIPMENT FROM 10:00 TO 5:00!!!!



**VEHICLES & EQUIPMENT:** 2018 FORD F550 XL CAB & CHASSIS, 4 X 4 (ONLY 34,500 MILES) V-10, BED WILL BE REMOVED - 1992 KENWORTH WITH SLEEPER, 60 SERIES DETROIT ENGINE (RUNS GOOD) NEW HOOD (672,898 MILES) - CUSTOM MINI CHOPPER (HAND PAINTED) - 1975 JEEP PROJECT (NO TRANNY, NO ENGINE) GOOD SHAPE - JOHN DEERE 4320 DIESEL TRACTOR (RUNS BUT NEEDS CLUTCH) 2 NEW REAR TIRES - QUIKWAY CRANE WITH CONTINENTAL 6 CYL ENGINE & 4 CYLINDER CRANE ENGINE (BOOM & BUCKET) RUNS - CATERPILLAR (MODEL DP50) OFFROAD FORKLIFT (RUNS BUT HAS A KNOCK IN THE ENGINE?), DUAL FRONTS, HYDRAULICS ARE GOOD - (NEWER) UTILITY BOX - C & M FLATBED - SPACE CAP SURVEYORS TRUCK BODY - PU BOX TRAILER - RUNNING GEAR HAY TRAILER - 1958 FORD F100 (RAN WHEN PARKED) COMPLETE - 1957 BEL AYRE PROJECT CAR BODY - LG. ASST. OF PROJECT CARS FROM YEARS ON THE RANCH



**PAINT BOOTH & FAB EQUIPMENT:** 2000 SPRAY BAKE 14' X 26' WITH 14' WALLS, FULLY INSULATED, (NEWER) COMPLETE FIRE SUPPRESSION SYSTEM, SEMI DOWN DRAFT, 10' DOORS - LINCOLN ELECTRIC TORCHMATE CLASSIC 4' X 8' CUTTING TABLE AND SOFTWARE (ONLY 4 YRS OLD) - KENT KLS-1340A COMMERCIAL METAL LATHE (SERIAL # 1550352) - 92 HURCO 3 AXIS CNC VERTICAL MILLING MACHINE WITH SOFTWARE - LG. ECONOLINE SANDBLAST CABINET - MOTORCYCLE FRAME JIG - HEATH PATTERN CUTTER & TABLE



**TOOLS, SHOP & MISC:** CHALLENGER 10,000 LB 2 POST LIFT - TIRE MACHINE - LINCOLN SAE-400 WELDER (SN A-708225) RUNS & WELDS - STEEL RACK WITH LG. ASST. OF MISC. STEEL - 4' X 4' WELDING TABLE - 4' X 4' WELDING TABLE WITH NO TOP - TIRES & RIMS - LG. ASST. OF OLD OIL CANS, QUAKER STATE BARRELS, ANTIQUES ETC.... 4' X 4' CHEMICAL TANKS - LG. ASST. OF NEW COMMERCIAL ELECTRICAL PARTS, FITTINGS, BASES (MOSTLY USED IN OIL FIELD PUMP HOUSES) ETC.... - FRAC STAND - (2) SETS OF STEEL STAIR CASES - GRATED WALKWAYS WITH RAILING - GRATED STEPS (NO RAILING) - (3) DIAMOND PLATE TOOL BOX/FUEL TANK COMBOS - (4) NEW TRANSFORMER BOXES & (4) STANDS - FREESTANDING ELECTRICAL PANEL BOARDS - WOODEN SPOOLS - LG. ASST. OF 2" PVC - 20 FT 4 TIER STEEL OR MATERIAL RACK - LG. ASST. OF OLD BUMERS & MISC. CAR & VEHICLE PARTS - AXLES - WINCHES & PARTS - STEEL BENCHES & SHELVES - ANGLE STEEL CUTTING TABLE - (NEW) HARLEY DAVIDSON TRUCK RIMS - (3) VINTAGE STEEL OIL PUMPS - STEEL STEPS & PARTIAL WALKWAY - SUNNEN ROD HONE - LG. I BEAM ROLLING SHOP HOIST - LG. ASST. OF PIPE: 2 3/8" - 2 7/8" - 3" - 4" - SUCKER ROD: 3/4", 7/8", 1"



**FOR MORE INFORMATION PLEASE CONTACT JUSTIN 307.660.2292**

TERMS: Cash or Check with picture ID. We also take Credit Card Payments with a 3% Transaction Fee. All items sold as is - where is - not responsible for accidents or theft. Announcements made the day of the auction, take precedence over all printed materials. Sales Tax collected.

**FOR FULL LISTING GO TO AUCTIONZIP.COM ID #27765**

*Sale Conducted By:*



# BIESHEUVEL AUCTION & APPRAISAL

**Auctioneer: Justin Biesheuvel • 307.660.2292**