

LIVE AUCTION

TOWNSEND COMPANY INC. (EXCESS OILFIELD INVENTORY) & OIL CITY SUPPLY (NEW INVENTORY)

LIVE AUCTION

# AUCTION

SATURDAY, SEPT. 19TH, 2020 • 9:03 AM  
588 OIL CITY RD. • OSAGE, WY 82723



**DIRECTIONS:** FROM MOORCROFT TAKE HWY 16 EAST (33 MILES) AND JUST PRIOR TO OSAGE TURN SOUTH ON OIL CITY RD. AND GO 3 MILES SOUTH TO AUCTION SITE, FROM NEWCASTLE TAKE HWY 16 WEST (15 MILES), TURN OFF IS JUST PAST THE OSAGE TURN ON THE SOUTH AND GO 3 MILES SOUTH TO AUCTION SITE. COME ON BY FRIDAY FROM 10:00 A.M. UNTIL 5:00 P.M. FOR AN EARLY PREVIEW.



**AUCTIONEERS NOTE & LOAD OUT:** WE HAVE BEEN ASKED TO HELP THE TOWNSEND FAMILY WITH THE DOWNSIZING OF THE OILFIELD OPERATIONS. WE WILL HAVE LOADERS ONSITE SATURDAY & SUNDAY AND BY APPT. AFTER THAT. BUYERS OF LARGER ITEMS LIKE PUMP JACKS & HEAVIER ITEMS WILL BE RESPONSIBLE FOR LOADING THEMSELVES. BUYERS WILL BE RESPONSIBLE FOR THE REMOVAL OF LARGER ITEMS. BIESHEUVEL AUCTION & APPRAISAL & TOWNSEND COMPANY INC. ARE NOT RESPONSIBLE FOR ACCIDENTS ON THE PROPERTY DURING THE AUCTION OR DURING LOAD OUT. WE WILL BE CONDUCTING THE MAJORITY OF THE AUCTION FROM THE TRUCK, THERE WILL BE ALOT OF WALKING, IF YOU WOULD LIKE TO BRING A 4 WHEELER OR SIDE BY SIDE, THERE WILL BE PLENTY OF ROOM.



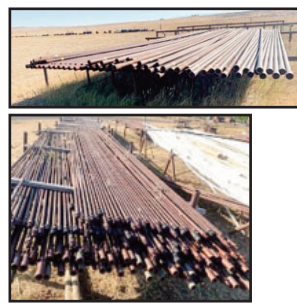
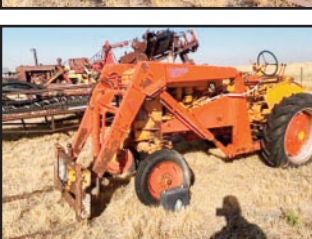
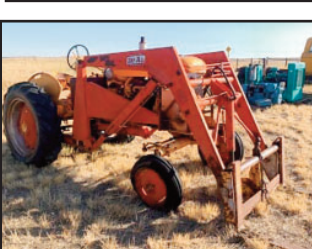
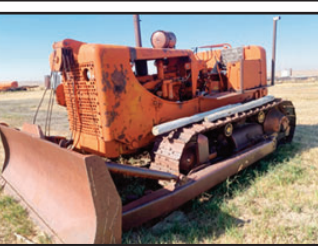
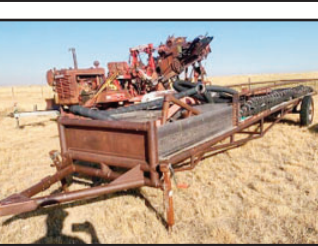
**OIL CITY SUPPLY (NEW PUMP SHOP SUPPLIES):** PUMP BARRELS - VISES FOR DOUBLE PUMPS - PLUNGES - POLISH ROD LINES - POLISH RODS - LG. ASST. OF PONY RODS (VARIOUS SIZES) - 1/2" TO 4" FITTINGS & T'S - V-BELTS B100'S TO D225 - PUMP PARTS - HARBISON/FISHER PUMP PARTS - KIMRAY CENTRAL VALVE FOR TREATERS (REBUILD KIMRAY VALVE PARTS) - (NEW & REBUILT) CASING HEADS - FLOW LINE ENDS - PUMP SHOP REBUILD TOOLS - PIPE TAPE, PIPE DOPE, THREAD COMPOUND ETC.... - RIG SUPPLIES - SWAB CAPS - MARKING PAINT - WATER TANKS - SEPTIC TANKS SUPPLIES - PRESSURE GAUGES - TEMP GAUGES - CASING HEAD RUBBERS - LG. ASST. OF NEW BRASS FITTINGS & VALVES - ENGINE PARTS - ARROW, BELL & CONTINENTAL BEARINGS - RINGS - CAPS - ROLLERS - DRIVE MOTORS - BUSHING RADIATORS - HEAD GASKETS - LMI CHEMICAL PUMPS - TUBING ANCHORS - PVC PIPE - SEWER PIPE - WATER PIPE - COMPLETE DOWNHOLE PUMPS FOR WELLS UP TO 5000 FT - THIS WILL BE THE REMAINING INVENTORY FROM OIL CITY SUPPLY **(THERE IS TOO MUCH TO LIST)**



**PIPE & YARD ITEMS:** LG. ASST. OF PUMP JACKS & PARTS, NATIONAL, ALTEN, CABOT, PACIFIC WESTERN ETC.... - PUMPS & PUMP MOTORS, SIMPLEX, GARDNER DENVER ETC... - INJECTION PIPE (SOME FIBERGLASS, SOME WRAPPED) - 2 7/8" DRILL PIPE, CORE BARREL, (4) DRILL COLLARS - LG. ASST. OF FAIRBANKS PUMP JACK MOTORS - SHERMAN TANK (ALL ALUMINUM) V-8 ENGINE - LG. ASST. OF SUCKER ROD 1/2", 7/8", 3/4" (100'S OF JOINTS) - APPROX. (360 JOINTS) OF (NEW) 1 1/8" SUCKER ROD - 2" INJECTION PIPE - 2" INJECTION PUMP - 3" & 4" LINED PIPE - 15 +/- TELEPHONE POLES - YELLOW BAND TESTED NADA TUBING - LG. ASST. OF 2", 2 3/8", 2 7/8" PIPE - PULLIES - SHIVS - SADDLE BEARINGS - HUBS - BRIDLES - PROPANE POWERED TRANSFER PUMP - (3) GEN SETS - SMALLER GENERATORS - LG. ASST. OF CEMENT CENTRALIZERS - DRILL BITS - FLOATS - CONNECTORS - JOINTS - TANK SKIDS - LG. ASST. OF WALKING STAIRS - LG. ASST. OF CABLE - LG. ASST. OF TOOL BOXES - SIDE TOOL BOXES - JOB BOXES - SEMI EXHAUST - DRIVELINES - REAR ENDS - LG. ASST. OF USED T's, COUPLINGS, COLLARS, FITTINGS, JOINTS, VALVES ETC.... 8 ft X 14 ft STEEL DOG HOUSE - 8ft X 30ft STEEL DOG HOUSE - OIL TANKS (GREAT SHELTERS) - TANK PANELS - LG. RIMS (GREAT FIRE PITS)



**FARM & RANCH:** ALLIS CHALMERS HD-16 DOZER (WAS RUNNING) THIOKOL SPRYTE SNOW CAT (WAS RUNNING) - OLDER VERMEER TRACK TRENCHER & TRAILER - CLEVELAND TRENCHER (MODEL 95) - PIPE TRAILER (WITH HOSES) - FARMALL TRACTOR WITH LOADER - FARMALL TRACTOR? - DODGE 800 FEED TRUCK - 1973 KENWORTH SEMI - CATTLE GUARDS - (2) CALF TABLES - SMALL SPRING HARROW PARTS - TRACTOR RIMS - SICKEL MOWER - CEMENT CULVERT - FUEL TANK - 10ft DISK - 12ft SPRING HARROW - CASE 12 FT SEEDER - LG. V-PLOW



FOR MORE INFORMATION PLEASE CONTACT  
JUSTIN 307.660.2292

TERMS: Cash or Check with picture ID. We also take Credit Card Payments with a 3% Transaction Fee.  
All items sold as is - where is - not responsible for accidents or theft.  
Announcements made the day of the auction, take precedence over all printed materials. Sales Tax collected.

FOR FULL LISTING GO TO AUCTIONZIP.COM ID #27765

Sale Conducted By:



# BIESHEUVEL AUCTION & APPRAISAL

Auctioneer: Justin Biesheuvel • 307.660.2292