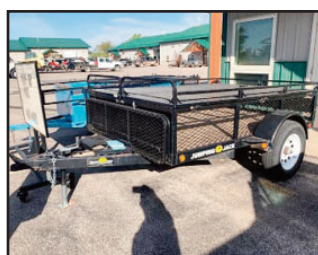


COLLECTOR AUCTION

SUNDAY, OCTOBER 4TH • 9:58 AM
1890 WARLOW DRIVE • GILLETTE, WY 82716

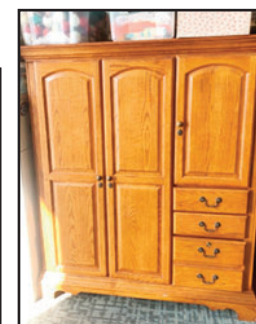
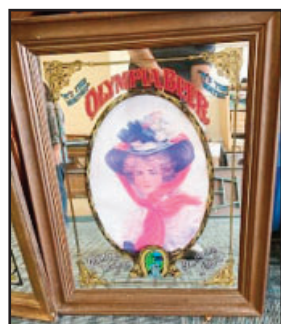


DIRECTIONS & AUCTIONEERS NOTE: FROM I-90 IN GILLETTE TAKE HWY 50 (EXIT 124) AND TURN NORTH, GO 1000 FT AND TURN LEFT ONTO HWY 14-16 (NORTH), GO 1/4 MILE AND TURN RIGHT (EAST) ON WARLOW DR., AUCTION WILL BE LOCATED ON YOUR LEFT (JUST BEHIND SIMPSON'S PRINTING, WATCH FOR SIGNS!!!!!!) THIS WILL BE A GREAT SALE FOR THE COLLECTOR AND HOUSEHOLD, WE HAVE PLANNED A SUNDAY AUCTION AS TO NOT INTERFERE WITH THE BUSINESSES LOCATED IN THE BUILDINGS WHERE THE AUCTION WILL BE HELD. COME BY ON FRIDAY FROM 12:00 TO 6:00 P.M. FOR AN EARLY PREVIEW, THERE ARE MANY ITEMS TO UNPACK & SORT THROUGH SO HOPE TO SEE YOU THERE!!!!!!

VEHICLES & TRAILERS SELL @ 1:00 P.M.: RESTORED 1965 PLYMOUTH BARRACUDA (RUNS GREAT) WITH INLINE 6 CYL, GOTTA SEE THIS CAR!!!!!! - 1998 FORD MUSTANG GT 4.8L (95,812 MILES) RUNS GREAT - 1965 PLYMOUTH BARRACUDA PROJECT CAR V-8 - 1969 FORD THUNDERBIRD (OLDER RESTORATION) GREAT SHAPE AND RUNS GOOD - 1988 CORVETTE (98,058 MILES) RUNS GREAT - 2001 FORD RANGER EDGE (192,468 MILES) RUNS GOOD - 2000 CHEVY S-10 PU (133,000 MILES) - 1979 CHEVY STEPSIDE CUSTOM DELUXE (RUNS BUT NEEDS WORK) - 1998 CHEVY 1/2 TON EXTENDED CAB WITH PLOW - 1993 GMC SUBURBAN PLOW TRUCK (400,251 MILES) - 1976 GMC SUBURBAN PLOW TRUCK (RUNS BUT MILES ARE UNREADABLE) - 2004 CHEVY TRAILBLAZER 4X4 (95,000 MILES) - SUZUKI 4 WHEELER (NOT RUNNING) - RESTORED INTERNATIONAL CUB CADET LAWN TRACTOR - DUNE BUGGY (PROJECT) - CRAFTSMAN (YTS4500) RIDING MOWER - 2010 CARRY ON TRAILER (4FT X 8FT) WITH RAMP - SMALL (4FT X 8FT) BOX TRAILER - 2008 (5FT X 10FT) JUMPING JACK TRAILER WITH RAMPS -

HOUSEHOLD & COLLECTIBLES: HOWARD BABY GRAND PIANO - STEEL WALL CABINET - (STEEL) WIDE 3 DRAWER FILE CABINET - LG. ASST. OF HOUSEHOLD ITEMS, DISHES, CROCK POTS, SILVERWARE ETC..... HEAD BOARDS - OLYMPIA BEER MIRRORS - LG. ASST. OF ART, WYOMING PICTURES, C.M. RUSSELL'S, LITHO'S, ANTIQUE PRINTS - WYOMING ARTIST (ROBERT WOOD) - SMALL WOODEN DESK - NIGHTSTANDS - MICROFIBRE SOFA & LOVESEAT - BAR STOOLS - VINTAGE RADIO - LG. ASST. OF ELECTRONICS, VHS, DVD PLAYERS, STEREOS - LG. ARMOIRE - BUFFET - SITTING CHAIRS - DRESSERS - COMMERCIAL COIN COUNTER - T.V. STANDS - ROCKING CHAIR - KIDS ROCKING CHAIR - (2) NEWER SITTING CHAIRS - TABLE LAMPS - COFFEE TABLES - QUEEN BED - CHINA HUTCH - DINING ROOM TABLE WITH UNIQUE CHAIRS - WASH BASIN PITCHER & BOWL - LG. T.V. CABINET - 60" L.G. T.V. - CURIO CABINETS - LG. ASST. OF ERTL COLLECTIBLES (AMERICAN MUSCLE) DIE CAST TOYS - RACING ACTION COLLECTIBLES (PLATINUM SERIES) FUNNY CARS - WOODY'S WAGON DIE CAST TOY - 631E SCRAPER DIE CAST TOY - LG. ASST. OF NASCAR TOYS - VERY LG. ASST. OF MATCHBOX CARS - LG. COLLECTION OF OWNERS ELITE NASCAR TOYS STILL IN BOX - MATCH BOX SEMIS - 11 OFFICE DESKS - (12) ROLLING OFFICE CHAIRS - PLASTIC WALL LOCKER - DISPLAY CASES - (5) SITTING OFFICE CHAIRS -

OUTDOORS: BLACK RIMS & TIRES (EXTENSION KIT TO FIT THE 165 BARRACUDA) - 250 GAL PU WATER TANK - WEATHER GUARD DIAMOND PLATE TOOL BOX - BETTER BUILT DIAMOND PLATE TOOL BOX - ATV TIRES - MISC. TIRES & RIMS - NARROW TRUCK TOOL BOX - YARD & GARDEN TOOLS & MORE!!!!!!



FOR MORE INFORMATION PLEASE CONTACT JUSTIN 307.660.2292

TERMS: Cash or Check with picture ID. We also take Credit Card Payments with a 3% Transaction Fee. All items sold as is - where is - not responsible for accidents or theft. Announcements made the day of the auction, take precedence over all printed materials. Sales Tax collected.

FOR FULL LISTING GO TO AUCTIONZIP.COM ID #27765

Sale Conducted By:

BIESHEUVEL AUCTION & APPRAISAL

Auctioneer: Justin Biesheuvel • 307.660.2292

