

PARTIAL RETIREMENT AUCTION

CHUCK KERSTEINS

Saturday, May 8, 2021 • 1 PM MST

At the ranch, 23322 143rd St., Isabel SD 57633 – 3.3 miles south of Isabel



HAYING EQUIPMENT

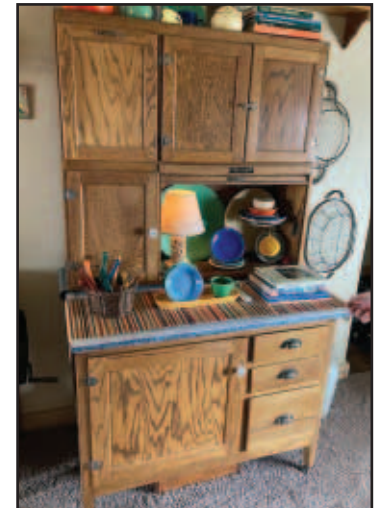
- 560 New Holland Baler, 3-4,000 bales
- 220 New Holland Discbine, like new
- R 2300 16 ft Vermeer V Rake
- 4440 John Deere Tractor
- 16 ft 1475 New Holland Hydroswing
- Double Bale Spear
- 1431 New Holland 14 ft Discbine, new blades
- BR780 New Holland Baler
- Hesston 8100 Swather with draper head
- Vermeer Hay Processor

VEHICLES & TRAILERS

- 2013 Ford F150 2 wheel drive extended cab pick up 80,000 miles
- 1980 Merrit 48 ft Cattle Pot
- 2017 Carry On Car Trailer 7 by 14
- 2006 7 by 16 Car Trailer
- 2014 Delta 4 horse bumper pull trailer
- Camper
- 2016 High Country Montana Camper (model HM293RK16) Like New!!!

OTHER ITEMS

- 4, 12 ft tire tanks with steel bottoms
- Verns portable loading chute, 2 years old
- Farm Hand 817 grain grinder
- Gale 260 gravity flow box
- 158 John Deere Loader with mounts
- Hylift Dual Loader
- Tub & Alley
- Antiques & other tools



Auctioneer:
Dace Harper

Cell Phone: 605-515-1535
Email: harperauction@gmail.com

For more information go to:
harperauctioncompany.com

Not responsible for accidents
Terms: Cash or Check w/ proper ID