

LIVE AUCTION

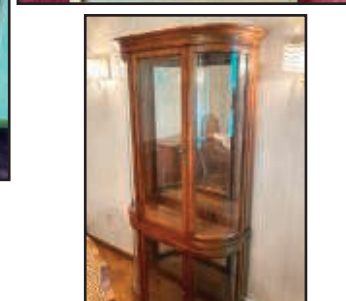
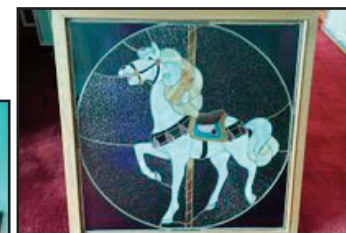
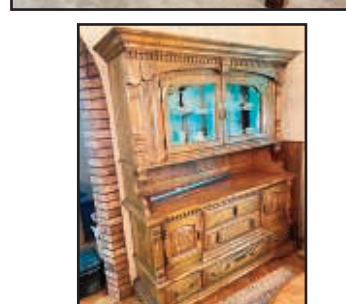
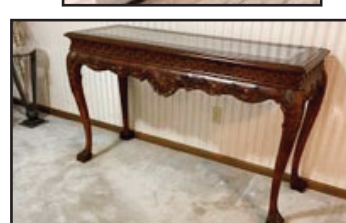
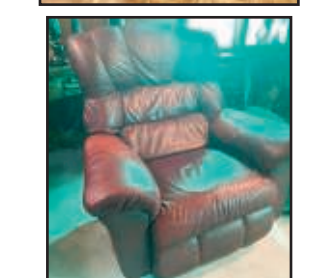
CHUCK LAUGHLIN ESTATE

LIVE AUCTION

AUCTION

SATURDAY, AUGUST 13TH, 2022 • 9:07 AM

5100 ZEE COURT • GILLETTE, WY 82718



DIRECTIONS & AUCTIONEERS NOTE: WE HAVE BEEN ASKED BY THE FAMILY TO HELP SETTLE THE ESTATE OF CHUCK LAUGHLIN, WE WILL HAVE ALOT MORE BY SALE DAY AND COME EARLY AS PARKING IS A LITTLE SCARCE. FROM GILLETTE TAKE (HWY 59) 4 MILES SOUTH TO UNION CHAPEL RD., TAKE A LEFT (GO EAST) ON UNION CHAPEL RD. (1.5 MILES) TO MATHER AVE., GO LEFT (NORTH) TO END OF BLOCK (SLEEPY HOLLOW BLVD) TURN RIGHT (EAST) AND GO 1/4 MILE TO IRVING BLVD. (TURN LEFT) NORTH AND GO 600 FT TO AUCTION SITE. WE WILL HAVE A VIEWING FROM 10 TO 5:00 ON FRIDAY, SO COME ON BY AND TAKE A SNEAK PEAK.

VEHICLES SELL @ 12:09 P.M.: 1966 CHEVY CAPRICE 2 DR HARD TOP WITH 327 ENGINE (GREAT SHAPE) RUNS AND HAS BEEN STORED INSIDE - 2009 POLARIS RAZOR 800 (50" SIDE BY SIDE) ONLY 495 ORIGINAL MILES - 2008 ARCTIC CAT 700 4 WHEELER WITH WINCH (ONLY 610 MILES) LIKE NEW - 1989 JEEP (155,000 MILES) 2.3L (4CYL) ENGINE, RHINO LINED, RUNS GOOD -

SHOP & TOOLS: CAMP CHAIRS - FOLDING CHAIRS - PROPANE BOTTLES - LG. ASST. OF CHEMICALS - SLEDS - TRUPER WHEEL BARROW - COOLERS - REDLINE MX20 BIKE - HORIZONTAL AIR COMPRESSOR - JUMPER CABLES - (2) NAPA WALL CABINETS - TOP & BOTTOM TOOL BOX - LG. ASST. OF HAND TOOLS, SAWS, HAMMERS, RATCHETS, SOCKET SETS, AIR TOOLS, ALUMINUM PIPE WRENCHES, SCREWDRIVERS ETC.... - STEEL DRAFTING BENCH - CRAFTSMAN PROFESSIONAL JOINTER/PLANER - COMMERCIAL TABLE SAW - COME -ALONGS - CHAINS & BOOMERS - LG. OLD METAL LATHE - LG. ASST. OF NUT & BOLT BINS - CONTINENTAL HD DRILL PRESS - LG. 6" BENCH VISE - ELECTRICAL TOOLS - LINCOLN IDEALARC SP-100 WELDER - FORNEY STICK WELDER - GOOD YEAR ENGINE HOIST - MILWAUKEE COMPOUND MITRE SAW - SANBORN 60 GAL AIR COMPRESSOR - CHAMPION 3500 GENERATOR - PROPANE HEATER - LG. ASST. OF YARD & GARDEN TOOLS - WERNER STEP LADDERS - TRAMPOLINE - SWING SET - PEDASTAL STYLE SINK - GRINDING WHEEL -

HOUSEHOLD & MISC.: ORNATE ELECTRIC HANGING LAMP - ORNATE GLASS TOP SOFA TABLE & MATCHING COFFEE TABLE - LG. DINING ROOM TABLE WITH 7 CHAIRS, 2 CAPTAINS CHAIRS & 2 LEAVES - LG. ASST. OF LARGE SIZE ORNAMENTAL VASES - UPHOLSTERED SITTING BENCH - OAK NIGHT STANDS - (2) COMPUTER DESKS - MIRRORED HALL TREE - MCCOY COOKIE JAR - (NEW) GRILL SET - LG. DRESSER WITH MATCHING HIGH BOY DRESSER - HOPE CHEST - 40" LCD T.V. - (2) ENTERTAINMENT CENTERS - KING SIZE BED - QUEEN SIZE BED - LG. ASST. OF LAMPS - FILE CABINETS - (2) BUFFETS - MICROWAVE - LG. ASST. OF COSTUME JEWELRY - MENS WATCHES - (2) LARGE UPRIGHT JEWELRY BOXES - 2010 MULE DEER FOUNDATION BELT BUCKLE - POCKET KNIVES - LG. ASST. OF WALL ART & PICTURES - 3FTX3FT STAINED GLASS CAROUSEL HORSE - ORNATELY FRAMED EVERT PIETERS PICTURE - PLANT STANDS - LEATHER RECLINER - MATCHING SOFA & LOVESEAT - SINGER SEWING MACHINE ON STAND - (4) LARGE HARDWOOD CURIO (CHINA CABINETS) - SMALL 2 SHELF CURVED GLASS CURIO CABINET - 3 SHELF CURVED GLASS CURIO CABINET - CORNER CURIO CABINET - LG. CHINA CUPBOARD BUFFET - LG. ASST. OF KIDS TOYS - LG. ASST. OF DVD'S - SMALL DECOR CAROUSEL HORSE - ANTIQUE OAK SWIVEL CHAIR - STEEL FRAMED FOLDING CHANGING MIRROR - (2) SETS OF CHINA - TILE TOP DINING ROOM TABLE WITH 4 CHAIRS - LG. BRINKMAN SS GRILL - LLADRO SCULPTURES - SCALE MODEL SAIL BOATS - STACKING CHAIRS - ACOUSTIC GUITAR - IBANEZ ELECTRIC GUITAR - SCULPTURES - IRONWOOD DOLPHINS - (2) GAS CYLINDERS - OLD TRUNKS - RUNNER SLEDS - (2) CAST IRON COUNTER TOP WATER PUMPS - CASH DRAWER - LG. ASST. OF OIL LAMPS - BEER CAN AIRPLANES - CLUB WEIDER 560 SQUAT RACK, WEIGHT BENCH, BARS, DUMB BELLS, FREE WEIGHTS, BELTS ETC....



FOR MORE INFORMATION PLEASE CONTACT JUSTIN 307.660.2292

TERMS: Cash or Check with picture ID. We also take Credit Card Payments with a 3% Transaction Fee. All items sold as is - where is - not responsible for accidents or theft. Announcements made the day of the auction, take precedence over all printed materials. Sales Tax collected.

FOR FULL LISTING GO TO AUCTIONZIP.COM ID #27765

Sale Conducted By:



BIESHEUVEL AUCTION & APPRAISAL

Auctioneer: Justin Biesheuvel • 307.660.2292