

LIVE AUCTION **TOWNSEND ANTIQUE, VEHICLES, EQUIPMENT & OILFIELD** LIVE AUCTION

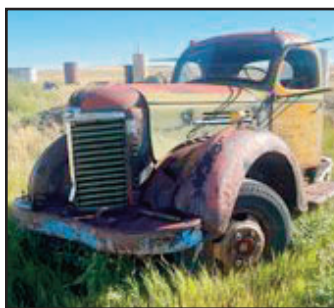
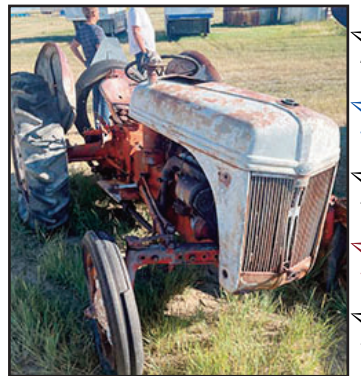
# AUCTION

**SATURDAY, SEPTEMBER 10TH, 2022 • 9:39AM**  
**288 OIL CITY RD • OSAGE, WY 82723**



**DIRECTIONS & AUCTIONEERS NOTE:** FROM MOORCROFT TAKE (HWY 16) EAST 33 MILES TO OIL CITY RD. (HWY 451) AND GO SOUTH 3 MILES, AUCTION WILL BE ON YOUR LEFT HAND SIDE (EAST). FROM NEWCASTLE TAKE (HWY 16) WEST 15 MILES TO OIL CITY RD AND GO SOUTH 3 MILES TO AUCTION SITE, WATCH FOR SIGNS!!!! THIS WILL BE OUR 2ND AUCTION FOR TOWNSEND OIL AND MOST OF THE VEHICLES ARE PARTS VEHICLES BUT DO HAVE TITLES, COME ON OUT FRIDAY, SEPTEMBER 9TH FOR AN EARLY PREVIEW FROM 10:00 TO 5:00 AND WE WILL SEE YOU SATURDAY FOR THE SALE. WE WILL BE LOADING OUT SATURDAY AFTER THE AUCTION AND SUNDAY FROM 8:00 TO 3:00 P.M. SO BRING YOUR TRAILERS!!!!

**VEHICLES & EQUIPMENT:** (2) 30FT & 20FT ENCLOSED SEMI VANS WITH SIDE STORAGE (USED FOR PROPANE PICKUP) NICE DRY STORAGE WITH MULTIPLE COMPARTMENTS ON EACH SIDE - JOHN DEERE 350 CRAWLER WITH LOADER (SN SNE7350001152T) - 1969 CHEVY SUBURBAN (COMPLETE) - 1972 FORD STYLESIDE PU - 1970 FORD PU - 1975 INTERNATIONAL TRUCK - 1977 FORD STYLESIDE PU - 1978 FORD PU - 1982 FORD F-250 PU - 1984 FORD PU - 1985 FORD PU - 1986 FORD PU - 1991 FORD PU - 1949 INTERNATIONAL PU - 1947 DODGE TRUCK - 1947 FEDERAL 2 TON - 1948 GMC TRUCK - 1951 DODGE 1 TON POWER WAGON - 1945 GMC PU - 1954 FORD F-600 - 1957 CHEVY TRUCK - 1983 CHEVY PU - 1986 FORD PU - 1985 FORD PU - 1985 FORD PU - 1984 FORD 3/4 TON BIG FOOT - 1967 GMC TOOL TRUCK (SERVICE RIG) - 1942 GMC 6X6 - 1958 GMC 2 TON - 1975 FORD SUPERCAB - 1988 FORD 3/4 TON - 1978 FORD 3/4 TON - GMC 4000 TOOL TRUCK - 1964 COMET - 1989 FORD 3/4 TON - (3) STOCK CARS - 1958 GMC 2 TON - 120 BARREL TANKER TRAILER - 1972 INTERNATIONAL T-TRAC - FORD 9N TRACTOR - OLD CHEVY WAGON PARTS - COUNTRY SQUIRE WAGON - BUICK LESABRE - COUNTRY SEDAN WAGON - 1958 ALJO HOUSE TRAILER - ONAN 30KW GENERATOR 300 C10 WITH 500 GAL PROPANE TANK (30% FULL) - 500 GAL PROPANE TANK ON SKIDS - OMAHA BED - JD 350 LOADER - (2) 1 MAN SEMI SLEEPERS - ONAN WELDER/GENERATOR (MOTORS STUCK) - 80 GAL SHOP AIR COMPRESSOR (DAMAGED) - HYDRAULIC PIPE WRAPPER - PU TRUCK FUEL TANKS - (8) ARROW PARTS ENGINES - 100'S OF PIPE FITTINGS - (2) INJECTOR PUMPS (J-60 & J-30) - TREATER DUMP VALVES & REGULATORS - FLOW LINE CHOKES - VICTALIC FITTINGS & CLAMPS - STUFFING BOXES - ELEC BOXES - METERS OF ALL KINDS - SERVICE RIG DRILLING FLOOR - VARIOUS DRILLING PARTS - MUD MIXER CONE BITS - 400 BARREL FRAC MASTER MOBILE WATER TANK - (3) SMALLER PUMP JACKS - (2) 1000 GAL FUEL TANKS (CONDITION UNKNOWN) - OLD FLOAT TRAILER - (1) OLD DOG HOUSE - (3) GARAGE DOORS WITH RAIL (USED) - LG. AMOUNT OF SCRAP METAL!!!!!!!

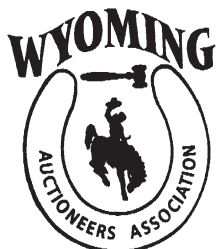


**FOR MORE INFORMATION PLEASE CONTACT JUSTIN 307.660.2292**

TERMS: Cash or Check with picture ID. We also take Credit Card Payments with a 3% Transaction Fee. All items sold as is - where is - not responsible for accidents or theft. Announcements made the day of the auction, take precedence over all printed materials. Sales Tax collected.

FOR FULL LISTING GO TO AUCTIONZIP.COM ID #27765

Sale Conducted By:



# BIESHEUVEL AUCTION & APPRAISAL

**Auctioneer: Justin Biesheuvel • 307.660.2292**