

LIVE AUCTION

BRUCE AMENDE ESTATE

LIVE AUCTION

AUCTION

SATURDAY, OCTOBER 15TH, 2022 • 9:37 AM

8315 N. U.S. HWY. 14-16 • GILLETTE, WY 82716



AUCTIONEERS NOTE & DIRECTIONS: WE ARE ALL SADDENED BY THE PASSING OF LONGTIME RESIDENT BRUCE AMENDE AND THE FAMILY HAS ASKED US TO HELP SETTLE THE ESTATE. THIS IS GOING TO BE A GREAT AUCTION WITH SOMETHING FOR EVERYONE IN THE FAMILY, DOWN TO THE PET, WE HOPE TO SEE YOU THERE AND WE WILL HAVE A PREVIEW ON FRIDAY FROM 10:00 TO 5:00 P.M. DIRECTIONS FROM I-90 TAKE HWY 50 (EXIT 124) AND GO NORTH TO SHELL STATION (HWY 14-16) AND TURN LEFT (NORTH) AND GO 23 MILES TO AUCTION SITE, AUCTION IS LOCATED RIGHT OFF HWY 14-16 ON YOUR RIGHT (EAST) SIDE OF THE ROAD, WATCH FOR SIGNS!!!!



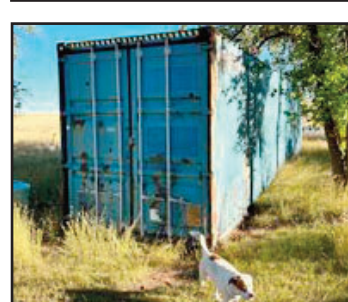
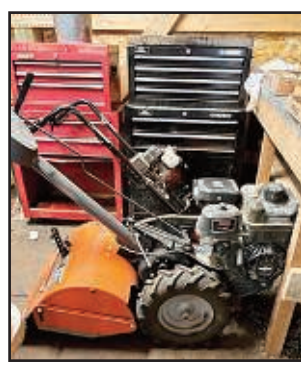
VEHICLES & EQUIPMENT SELL @ 1:00 P.M.: 2012 CASE 2R250 SKID STEER (ONLY 1950 HRS) FULL CAB, HEAT, AC ETC... - TITAN PALLET FORKS - BALE SPEAR - BOBCAT PALLET FORKS - GRAPPLE BUCKET - HYDRAULIC 4 FT PALLET FORKS - HESSTON 8400 SWATHER WITH 16FT HEAD (ONLY 1634 HRS) CAB, HEAT, AC (VERY CLEAN MACHINE) - H&S MFG BIFOLD 14FT HICAP WHEEL RAKE - FIATAGRI F130 DIESEL TRACTOR (ONLY 2623 HRS) RUNS GREAT, CAB, HEAT, HAS DUALS - FARMALL 1066 DIESEL TRACTOR WITH CAB, GRAPPLE BUCKET - 2008 DELTA 20FT GOOSENECK STOCK TRAILER - CASE IH RBX561 ROUND BALER (USED THIS YEAR) - NEW HOLLAND 660 ROUND BALER (USED THIS YEAR) - 1990 FORD DUALY WITH HOIST BED - 1979 IH FARM TRUCK (RUNS) WITH STEEL SIDED BED - LG. JOHN DEERE 24FT BATWING DISC - DBL AXLE ROUND BALE TRAILER - 12FT CHAIN HARROW - KOMFORT T-CLASS 5TH WHEEL CAMPER - HEAD GATE - TEBBEN 6FT BRUSH HOG - (2) 3PT POST HOLE AUGERS - 7 FT HINIKER BACK BLADE - (4) FUEL TANKS ON STANDS - LG. ASST. OF 4", 6", 8" WOOD POSTS - WOVEN WIRE - MISC. STEEL POSTS - 40 FT CONEX SHIPPING CONTAINER (GOOD SHAPE) - PU BOX TRAILER WITH (2) 100 GAL FUEL TANKS - HONDA FOREMAN 4 WHEELER - GENERAC GP8000E GENERATOR - DEWALT PRESSURE WASHER - HUSQVARNA 17" TILLER - PU BOX TRAILER - 30FT CHAIN HARROW - SMALL TILT SNOWMOBILE TRAILER - 20 FT GOOSENECK STOCK TRAILER (OPEN) - 1995 WESTERN PRO ENCLOSED HORSE TRAILER WITH FRONT TACK (SOME RUST) - 2004 HARLEY SPORTSTER 883 (ONLY 1370 MILES) - 40+ BAGS OF SEED (VARIOUS TYPES) - 25KW DIESEL GENERATOR (KUBOTA ENGINE) 480V



SHOP & OUTDOORS: -(2) CRAFTSMAN TOOL BOXES - LG. ASST. OF HAND TOOLS, WRENCHES, SCREWDRIVERS, HAMMERS, LEVELS, SOCKETS, ETC... - LG. ASST. OF LANDSCAPING BRICKS - MISC. TIN - WIRE GRATES - (2) BRANDING STOVES - STEP LADDERS & EXTENSION LADDERS - WIRE PANELS - CAR RAMPS - OUTDOOR BENCHES - CREAM CANS - DIAMOND PLATE TOOLS BOXES - PROPANE TANKS - WATER TANKS - TRAILER TIRES ON RIMS - (2) WHEEL BARROWS - LG. ASST. OF MISC. LUMBER - LG. ASST. OF MISC. SCRAP STEEL - LG. ASST. OF SHELVING - SS WIRE RACKS - SALAMANDER HEATERS - BATTERY CHARGERS - 25+ STEEL FOLDING CHAIRS - 4 WHEELER 12V SPRAY TANKS - DOLLYS - LG. ASST. OF ANTLERS - 20+ SETS OF HORSE HAMES - DBL HANDLED SAWS - LATTICE - EXPANDED METAL - SMITHS A-C WELDER - (2) CHAIN SAWS - LG. ASST. OF POWER CORDS - LG. ASST. OF NUTS, BOLTS, NAILS ETC... - DRAFTING TABLE - COOLERS - STACKING CHAIRS - TARPS - PLANTER - LG. ASST. OF YARD & GARDEN TOOLS, RAKES, WEDEATERS, SHOVELS ETC... - CAST IRON BATH TUB - PLASTIC FOLDING PICNIC TABLE - WELDING TABLE - HESS & HOPKINS SADDLE - TRAIL SADDLE - SADDLE BLANKETS - LG. ASST. OF NEW & USED TACK -



HOUSEHOLD & (NEW ITEMS): - SINGER TREADLE SEWING MACHINE - COPPER BOILER - UPRIGHT REFRIGERATOR - (3) CHEST FREEZERS - 1/2 PIG COMMERCIALY PROCESSED - 6+ CROCK JUGS - (2) RECLINERS - SOFA - LG. ASST. OF CANNED FOOD & NON PERISHABLE FOOD - EUROPEAN ANTELOPE MOUNT - DEAR ANTLERS - ROPE ART - LG. ASST. OF ANIMAL FIGURINES - BOOT LAMPS - SAD IRONS - PLASTIC ORGANIZERS - GLASS VANITY SHELF - HOUSE PLANTS - CROCK WATER COOLER - LG. ASST. OF DISHES & PLATES - STEAMWARE - LEATHER GLIDER ROCKER - APPLE BASKETS - BIRD CAGES - SLEEPING BAGS - LG. ASST. AND I MEAN LG. ASST. OF XMAS DECOR - ENAMELWARE - TRUNKS - LG. ASST. OF WESTERN DECOR - WRINGER WASHER - PLANTERS - WICKER FURNITURE - (2) SMALL APT REFRIGERATORS - POPCORN MACHINE - LG. ASST. OF PICTURE FRAMES - COW BELLS - (NEW) BALL CAPS, CANDLES, WESTERN ART, HORSE PICTURES, DECOR, TOYS, BOARD GAMES - LAMPS, BOARD GAMES ETC..... LG. ASST. OF POCKET KNIVES, BUCK KNIVES, FOLDING KNIVES ETC... - SHEEPSKIN RUGS - BLACK ANGORA HIDE - CALFSKIN HIDES - HANDMADE KIDS CHAPS - COWHIDE TABLE MATS - MENS VESTS, JACKETS, SHIRTS, HATS ETC...



FOR MORE INFORMATION PLEASE CONTACT JUSTIN 307.660.2292

TERMS: Cash or Check with picture ID. We also take Credit Card Payments with a 3% Transaction Fee.

All items sold as is - where is - not responsible for accidents or theft.

Announcements made the day of the auction, take precedence over all printed materials.

Sales Tax collected.

FOR FULL LISTING GO TO AUCTIONZIP.COM ID #27765

Sale Conducted By:



BIESHEUVEL AUCTION & APPRAISAL

Auctioneer: Justin Biesheuvel • 307.660.2292