

# FLIPPING 307 CONSTRUCTION RETIREMENT AUCTION

**SATURDAY, SEPT. 23, 2023 • 9:06 AM**  
**4451 ROPER LANE • GILLETTE, WY 82718**



**DIRECTIONS & AUCTIONEERS NOTE:** FROM I-90 TAKE (EXIT 124) HWY 50 AND HEAD SOUTH 3 MILES TO FORCE RD, TURN RIGHT (WEST) ON FORCE RD. AT THE LITTLE STORE AND GO 2 MILES TO ROPER LANE AND TURN RIGHT (NORTH) AND GO 1/5 MILE AND TURN RIGHT, WATCH FOR SIGNS!!!! THIS IS GOING TO BE A GREAT AUCTION WITH ALOT MORE TOOLS AND MATERIALS COMING FROM OTHER JOB SITES, COME ON OUT FRIDAY FROM 10:00 TO 6:00 FOR AN EARLY PREVIEW!!!!



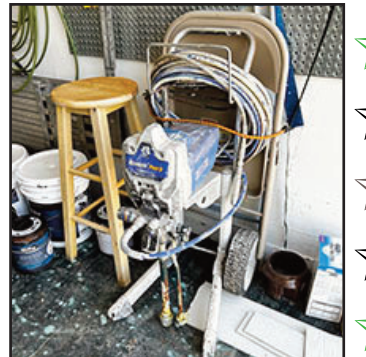
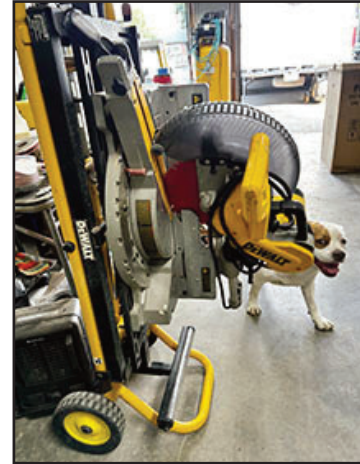
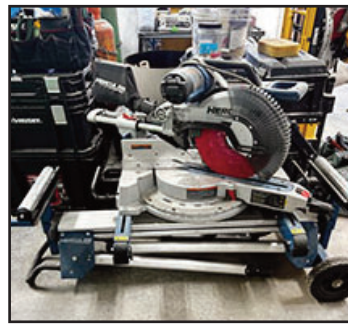
**VEHICLES & EQUIPMENT SELL @ 1:00 P.M.:** 2017 DODGE RAM 3500 LARAMIE DUALY, 6.7 HO CUMMINS, AUTO, 4WD, NEW TIRES, GOOSENECK, LOW MILES - 2006 DODGE 2500 SLT WITH SVC BODY, V8, AUTO, 2WD, (8,000 MILES ON NEW MOTOR) - 2011 JEEP WRANGLER SAHARA (140,000 MILES) RUNS GREAT/READY TO GO - 2018 BOBCAT T595 SKIDSTEER (1840 HRS), NEW TRACKS, NEW BATTERY, BOBTACH FEATURE, HEAT, AC, JOYSTICK CONTROLS, REAR WEIGHTS - QUICK ATTACH SNOW BLADE, PALLET FORKS, GRAPPLE BUCKET - 2020 SPARTAN 8.5' X 24' CUSTOM ENCLOSED TRAILER, AC, LIGHTS, GENERATOR, AIR COMPRESSOR, 7,000LB AXLES, STORAGE RACKS, TOOL BOXES, SET UP AND READY TO WORK - 2016 BIG TEX 14ft DUMP TRAILER WITH DROP DOWN SIDES - 2014 ROAD CLIPPER 32' GOOSENECK TANDEM DUALY - 18' CAR TRAILER - 1996 MITSUBISHI FLATBED TRUCK WITH 16' BED (NO TITLE) - 8' LIGHT DUTY FLATBED TRAILER - FUEL SLIP TANK - DODGE DAKOTA SPORT (PARTS) - FLATBED - PU BOX TRAILER - 1953 FORD (4DR) - (3) BOATS/TRAILERS - SUN TRACKER BASS BUGGY 16 PONTOON BOAT - COATS 40-40A TIRE MACHINE - 11000 W HOME GENERATOR, GAS (ONLY 70 HRS)



**TOOLS & SHOP:** LG. TOP & BOTTOM TOOL BOX WITH (2) SIDE BOXES - TILE SAW - CEMENT MIXER - PLATE PACKER - JACK HAMMER - BOMAG WHACKER PACKER - CHOP SAWS - TABLE SAWS - OXY/ACETYLENE TORCH - GENERATORS - AIR COMPRESSORS - CONCRETE SAW - METAL BRAKE - REBAR CUTTER - REBAR TIE - SAND BLASTER - PAINT SPRAYERS - TEXTURE MACHINES - SCAFFOLDING - DRYWALL JACK - LG. ASST. OF LADDERS (ALL SIZES) - INDUSTRIAL FANS - INDUSTRIAL DEHUMIDIFIER - LG. ASST. OF POWER TOOLS, DRILLS, SAWS, SKIL SAWS, WORM SAWS, HAND PLANERS (MULTIPLES OF EVERYTHING) - DEWALT COLLAPSIBLE TABLE SAWS - DEWALT UPRIGHT 60 GAL AIR COMPRESSOR - (22) 6 DRAWER COMMERCIAL NUT & BOLT BINS (STACKABLE) - SOLEUSAIR TEXTURE MACHINE - BENCH GRINDER ON STAND - DEWALT PORTABLE AIR COMPRESSOR - STIHL BR 600 BACK PACK BLOWER - WOOD CLAMPS - HERCULES SLIDING COMPOUND MITRE SAW - DEWALT COLLAPSIBLE SLIDING COMPOUND MITRE SAW - 20 TON PRESS - DRYWALL JACK - SCAFFOLDING & SCAFFOLDING PLANKS - 2 TON ENGINE HOIST - HUSKY PORTABLE TOOLS BOXES - LG. ASST. OF DEWALT DRILL BITS - PERFORMAX TOOL BOX - ENGINE STANDS - LIFTING STRAPS - TITANIUM WIRE FEED WELDER & CART - TEXTURE MACHINES - POWER WASHERS - PROPANE BOTTLES - GAS CANS - (2) MAGNUM PROX19 PAINT SPRAYERS - LG. ASST. OF HAND TOOLS, WRENCHES, PIPE WRENCHES, LEVELS, SQUARES, SCREWDRIVERS, HAMMERS, CRESCENT WRENCHES, SOCKETS ETC... - LG. ASST. OF AIR HOSE & POWER CORDS - WHEEL BARROWS - SHOP VACS - SAFETY PYLONS - CONCRETE TOOLS, EXTENSIONS, HAND TOOLS ETC... - ROLLING CARTS - LG. ASST. OF SPARE TIRES & RIMS - LG. ASST. OF HITCHES - SWAY BAR HITCHES - BUCKETS - BATTERIES - LG. ASST. OF BROOMS, SHOVELS, RAKES, ETC... - LG. ASST. OF GORRILLA SHELVING - LG. ASST. OF 20V DEWALT BATTERY OPERATED TOOLS, CHARGERS ETC... -



**HOUSEHOLD & MISC.:** COOLERS, CAMP EQUIPMENT - COLEMAN STOVES - DISHES - COOKWARE - COUCHES - MISC. FURNITURE - PLAYGROUND EQUIPMENT



**FOR MORE INFORMATION PLEASE CONTACT JUSTIN 307.660.2292**

TERMS: Cash or Check with picture ID. We also take Credit Card Payments with a 3% Transaction Fee. All items sold as is - where is - not responsible for accidents or theft. Announcements made the day of the auction, take precedence over all printed materials. Sales Tax collected.

FOR FULL LISTING GO TO AUCTIONZIP.COM ID #27765

Sale Conducted By:



## BIESHEUVEL AUCTION & APPRAISAL

**Auctioneer: Justin Biesheuvel • 307.660.2292**