

JIM WILSON ESTATE AUCTION

Wednesday, May 27, 2026 • Noon Sharp
at the Ranch • 318 Short Creek Rd. • Alzada, MT

Directions: West of Alzada on Hwy 212, Turn on Ridge Rd, Go 26 miles, Turn on Short Creek,
Go 2.9 miles. Watch for Signs!

AUCTIONEER NOTE: There is no cell service at the Sale Site, so if you can not be at the auction, you will need to call one of the auctioneers numbers prior to sale day & give them your order.

RIFLES

Ruger M77.243 w/ Leopold 3-9x40 scope
Ruger M77.220 swift Leopold 3x9 scope
Ruger M 77 Mark II.220 swift Leopold 6.5x20 scope
Browning .243 lever action
Browning X Bolt 6.5 Creedmore Leopold VX2LRP 6.5x20x50 Marlin Golden 39 A Mountie lever action .22
Squires Bingham Model 15.22 mag Weaver scope Remington .22 short or long Remington 700 7mm mag Leopold 3x9 variex 2 scope Remington 721 30-06 Weaver scope Remington.220 swift Stainless/ fluted barrel Leopold scope Remington 700.243 Leopold scope Remington 700 7mm Leopold 3x9 scope Remington 700.223 Burris Eliminator I scope Beggars 6.5 Creedmore Sig Sauer 4.5x14x44 scope Beggars 6mm creedmore Vortex6x24x50 scope Wetherby Vanguard .25-06 Vortex 4x12x44 scope Savage .243 Huskama 4x16 scope Savage Model 110 (carbon fibre barrel?) 6.5 Creedmore Vortex 4x16 scope CZ.17 HMR BSA Sweet 17 4x12 scope Winchester .22L Model 57 (old) Winchester Model 61.22s/l Has a tiny scope! Russi .22 s/l no scope (kid gun) Custom Build 30-06 Leopold 3x9 scope

SHOTGUNS

Stevens Model 67 Series E 12 gauge
Stevens 410 model 39A
Winchester Model 1911SL 12 gauge
Browning Magnum 12 12gauge Bakkal (Russia) 12 gauge over/under

HANDGUNS

Kimber Pro-carry II w/ holster
Smith & Wesson.40 cal +2 clips and holster
Smith & Wesson .32 W/original box and cleaning rod + manual
Ruger .22 +1 clip and holster
Ruger .17 cal w/ holster
Ruger Red Hawk.44mag
Colt Python .357 mag revolver
Colt .38 special revolver
Colt auto .22LR W/ original box
Interarms S&W .40 auto w/2 extra clips



FIREARM MISCELLANEOUS

Leupold Rangefinder 15x20 w/ Case
Lots of Dies & Cases full of Bullets
Reloading Set Up
Rifle Scabbards
Gun Vise



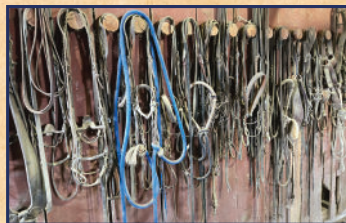
SADDLES

Layton Nunn 14 1/2
JJ Croft 16
Billy Cook 15
Lester Yolder Ashland, MT number 50 6
JJ Croft 16
JJ Croft 15 1/2



TACK

4 Leather Breast Collars
5 Ox Bow Stirrups
Harness
Tongues
Collars
Bridles
Ropes
Cinches
Halters



RANCH MISCELLANEOUS

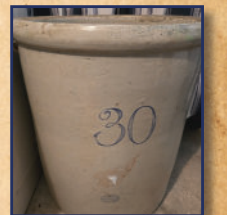
Squeeze Chute
Portable Docking Corral
Horse Drawn Bale Feeder
Bale Unroller
Water Wagon
Chuck Wagon
Green Wason Wagon Parts
Lead Sled

VEHICLES / EQUIPMENT

1976 GMC Truck
Semi Tractor
Tracks for Ranger 1000
Parts for Bobseld
Tires

MISCELLANEOUS

Bell Bund
Pan Yard
Anvil and Trims
JD Running Gear
Lallatin
Band Saw
Leather Sewing Sinter, Heavy Duty
Horse for Leather Work
30 Gallon Red Wing Crock
Castiron Cookware
Upper Bed Frame
Painting From Mandan Rodeo Days, 1 of 25
Mountain Lion Mount
Elk Hide w/ Hair
5 Deer Mounts Piles of Antlers
Coniber traps
Traps
Trap Thrower



AUCTIONEER NOTE: There is no cell service at the Sale Site, so if you can not be at the auction, you will need to call one of the auctioneers numbers prior to sale day & give them your order.

Auction Conducted by

BLACK HILLS AUCTION COMPANY

Contact: Justin Tupper: 605-680-0259 | Doug Dietterle: 605-580-1362

Cody Tupper: 605-569-3589

Terms of the Sale are Cash or Bankable Check











