

CONDUCTED BY EUGENE LORENZEN, GARY, SD - 605-237-4884

## CONSTRUCTION EQUIPMENT CONSIGNMENT

# AUCTION!

## SATURDAY, JULY 18, 2026

Sale Time 10:00 a.m. (Live & online available w/EquipmentFacts at 12:00 noon)

Located at: 17361 485th Ave., Gary, SD. From Gary, SD: 1 mile west, 5 miles north on 486th Ave & 1 mile west on 174th St.

Not responsible for accidents.

Lunch available.

### EARTH MOVING EQUIPMENT



- 1999 Grove RT640C Rough Terrain Hydraulic Crane w/jib
- 2001 Hypac C822A 25hp Compactor, ride on, vibratory, single, sheeps foot drum
- 2020 JD 331G Compact Track Loader
- JD CT332 Skid Loader 2018 JD 350 Claw
- JD 333G Compact Track Loader
- Case CX30B Mini Excavator
- Wacker RT 820 Trench Roller Packer 32" sheeps foot drum, walk behind
- 2017 Wacker BPU3050A Plate Compactor Skid Loader Buckets
- 2017 JLG 2632ES Man Lift 26' ES-Scissor Lift Pallet Forks
- 2006 Gehl DL8H42 115 hp Forklift, rough terrain, 42' lift
- 2012 Hamm HD+140 Tandem Roller w/ 2152 hrs

- 2023 JD 331G Skid Loader, Unused Machine w/4 hrs, high flow, 2-speed, heat & AC, air ride heated cloth seat, back up camera, self leveling



- 2021 Bobcat T76 Skid Loader w/156 hrs, C68 comfort package, heat & AC, air ride heated cloth seat, rear view camera, P95 performance pkg



- 2021 Bobcat T76 Skid Loader w/350 hrs, C68 comfort package, heat & AC, air ride heated cloth seat, rear view camera, P95 performance package
- 2026 ATS-ME18 Mini Excavator, thumb (new)
- 2025 CFG H15R Mini Excavator, hydraulic thumb (new)
- 2026 AGT SDA-140T Mini Track Loader (new)
- 2026 SDLanch SDLL60 Mini Track Loader (new)

### SUPPORT EQUIPMENT

- 1995 Venturi Aeration Ultra VA-500 15hp Aerator, 4"
- 2006 Victaulic VE270FSD Grooving Machine, pipe 4" to 10"
- 2008 Thawzall 100002M Ground Thawing Machine, trailer mounted
- 2002 Thawzall 20105M Ground Thawing Machine, trailer mounted
- 2007 Miller Trailblazer 302 Welder/Generator
- 1995 MultiQuip BLW400SS Welder/Generator
- 2005 Katolight 35KW Generator w/1200 hrs
- Honda Generator Straps, Chains, Ratchet Straps
- (4) 20' Storage Containers
- (2) 40' Storage Containers
- Vertical Mast Light Tower. Sykes 6" Water Pump
- InstaPrime F3L912 Water Pump 8"
- InstaPrime G95 Water Pump
- 2026 Starvox Hydraulic Breaker
- JCT Tree/Post Puller
- 2025 LandHonor 48" Hydraulic Adjusting Pallet Forks, 3000 lbs. cap.
- 2024 LandHonor 42" Rotating Pallet Forks (new)
- AGT Brush Cutter 72" (new)
- JCT Post Hole Auger w/3 bits (new)

### VEHICLES, ATV & TRAILERS

- 2024 Chevrolet Suburban, 51,000 miles, black
- 2017 GMC 2500 Sierra w/hail damage
- 2016 GMC 2500 Sierra. 2014 GMC 2500 Sierra
- 2018 Ezgo Electric Golf Cart. Ezgo Gas Golf Cart
- 2011 Polaris Sportsman 850XP LE ATV, AWD
- 1995 Franklin Office Trailer, no title
- 2000 Williams Scotsman 24'x8' Office Trailer, no title
- 2017 PJ Equipment Trailer, deck over w/monster ramps
- 2006 Dressen 14' Dump Trailer, tandem axle
- 2007 DBI Lodge Fish House Trailer
- 2008 Felling FT-16 Tilt Bed Trailer, tandem axle
- 2013 Aluminum Trailer
- 1993 Homemade Brick Trailer
- 1997 Towmaster Contrail Trailer
- 1997 Dressen Trailer
- 1992 Interstate T-20 Trailer, DT-20 on Hitch
- 2021 PJTM TJ243 FB Trailer, triple
- 2021 PJ Deckover 22'x8' Trailer, monster ramp #2
- 2010 Forrest River Enclosed 18' Trailer, tandem axle
- 2005 Forrest River Enclosed 18' Trailer, tandem axle
- 2007 Delta Enclosed 8'x20' Trailer, tandem axle
- 2006 Dressen 18' Trailer, tandem axle
- DCT Enclosed Trailer, tandem axle

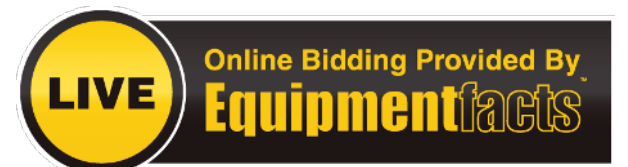
### CONCRETE & MASONRY ITEMS

- Concrete tools, Vibrators, Finishing Tools, Concrete Blankets

- Rebar Tiers MX RB398 Screed Demon, screed bar package
- Hilti Core Drill Diamond Coring Tool
- Hilti DD 350-CA Core Drill Diamond Coring Tool, 240 volt w/stand, bits, & spacer
- Groutzilla Stone Grout Pump
- Symons Concrete Forms
- Bierschbach Concrete Forms
- Bierschbach Scaffold Brackets
- Bierschbach Concrete Forms, 2'x8' Panels
- Bierschbach Concrete Forms Filler Panels
- Kennison Forest Scaffold Pland & Indian Mill
- Stan Houston Scaffolding
- Cornerstone Scaffolding
- Fork Mount Work Platform & Basket
- MBW M802E Electric Mortar Mixer, 8 cu ft, 2hp/230V
- MBW M60 Electric Mortar Mixer, 8 cu ft, 1.5hp/115V
- (2) Heat Wagons VG400
- Stihl Gas GutQuick Saw
- Stan Houston Masonary Saw

### PAINTING, PLUMBING & OTHER ITEMS

- Paint Sprayers, Sandblasting Equipment, Air Compressors, Hoods
- Atlas Copco 185 Air Compressor, trailer mounted, contractor type
- Farrow Machine
- Spray-Quip XTR7 Paint Sprayer, 6800psi
- Graco RTX 2500 pi Texture Sprayer
- MNWP Pipe Threader
- MNWP Large Pressing Tool
- MNWP Small Pressing Tool
- Stan Houston Lasers Trench Braces
- Trench Boxes, Rock Boxes, Pipe Plugs
- Seeding Equipment-sprayers, seeder
- Ladders Assortment of Hand Tools
- Other items too numerous to mention!



Watch EquipmentFacts.com for the pictures and online items that will be selling live and online 7/18/2026

**Sale Terms: Cash or Bankable Check**  
All other sale terms and conditions to be announced sale day. Announcements made sale day take precedence over written ads. Buyers Premium of 7.5% with a cap of \$2500. Online bidding with EquipmentFacts. Items to be removed within 2 weeks after the auction.

## CONSIGNORS-OWNERS

For more information call Eugene @ 605-237-4884



REAL ESTATE AUCTIONEERS:

**Eugene Lorenzen**

Gary, SD

605-237-4884

CLERK: Lorenzen Auction, Gary, SD

**Nathan Tjaden**

Brandt, SD

605-520-0111

To View This Auction Online Go To: SD Auctions, All Auction Sales, or Lorenzen Auction on Facebook.